

osom[®]

iFOB Test



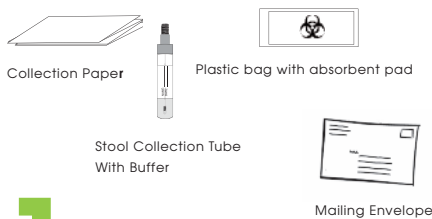
PATIENT STOOL COLLECTION INSTRUCTIONS

READ INSTRUCTIONS THOROUGHLY BEFORE BEGINNING TEST

YOUR PATIENT STOOL COLLECTION PACK SHOULD CONTAIN:

- Stool Collection Tube with Buffer
- 1 Collection Paper
- 1 Plastic Bag with absorbant Pad
- 1 Return Mailing Envelope
- 1 Instructions for collecting sample

CONTENT OF KIT



1

WHEN YOU ARE READY TO HAVE A BOWEL MOVEMENT, LABEL THE STOOL COLLECTION TUBE AS SHOWN BELOW:

- Using a ballpoint pen, write your name and date of stool collection on tube label.

osom[®]
iFOBT
Stool Collection Tube

2 mL

Name _____

ID _____

Date _____

PL1913

20°C → 38°C

IMF

Sekou Diagnostics, LLC
 6559 Top Gun Street
 San Diego, CA 92121 USA

LOT: _____

EXP: _____

2

ATTACH COLLECTION SHEET TO TOILET BOWL:

- Take Collection Paper out of the envelope.
- Lift toilet seat.
- Peel off cover strip from the tape on each end of the paper.
- Place collection sheet across the toilet bowl. Allowing sheet to sag slightly.
- Secure the paper onto the side first by placing adhesive tabs on the sides of the toilet rim, then secure the other side.
- Lower the toilet seat.



3

MAKE BOWEL MOVEMENT ONTO COLLECTION SHEET:

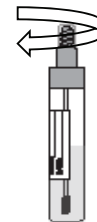
- **DO NOT** allow collection paper or feces to come in contact with toilet water or urine.
- The sample should not be tested if it becomes wet or contaminated.

CAUTION: If sample becomes contaminated with urine or toilet water, **DO NOT** continue. If this happens, a new sample will need to be collected. Place a clean collection paper on the toilet bowl, then collect new feces sample for testing.

4

STOOL SAMPLE COLLECTION

- Unscrew the Sampler cap from the Stool Collection Tube.
- Do not spill or pour out the liquid.



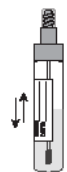
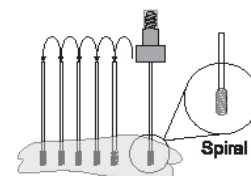
Stool Collection Tube

Spiral End

5

OBTAIN STOOL SAMPLE

- With the stool still on the Collection Paper, randomly poke the spiral end of the Sampler in at least 6 different sites of the stool. **DO NOT SCOOP.**
- Insert the Sampler back into the Stool Collection Tube and firmly tighten screw cap.
- Shake the tube well to mix the stool.

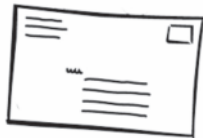


PATIENT STOOL COLLECTION INSTRUCTIONS

6

MAILING

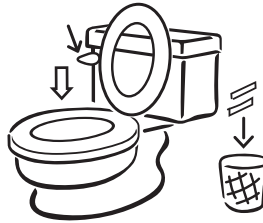
- Place Stool collection tube in plastic bag and seal.
- Place plastic bag in mailing envelope.
- Peel tape from envelope flap
- Fold flap on prefold line and press firmly.



7

FLUSH TOILET

- Flush remaining fecal sample and used collection sheet down the toilet.

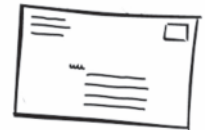


- If you have a low flow toilet, discard the collection sheet in trash to avoid clogging.

8

RETURN THE SAMPLE

- Write your return address and the name and address of the doctor/lab who gave you the stool collection pack in the space provided on the Return Mailing Envelope.
- Add appropriate postage and mail to your doctor's office/lab.



IMPORTANT

Contact your doctor if you:

- See blood in the toilet or in your stool.
- Have medical-related questions.

Contact Sekisui Diagnostics Technical Support if you:

- Are having difficulty or do not understand how to collect your sample.
- Find any of the components listed at the top of these instructions missing when you opened the packet.
- Need a replacement of stool collection tube or envelope.

CONTACT INFORMATION FOR ASC

Tel: 318-798-3306 (U.S. only)



AmericanScreening

9742 St. Vincent AVE
Suite 100
Shreveport, LA 71106
1-318-798-3306

EC REP Ltd

5 Fitzwilliam Square East
Dublin 2, Ireland
Tel: +353 1 2 544 944
Info@ecrep.ie
www.ecrep.ie

EC

REP